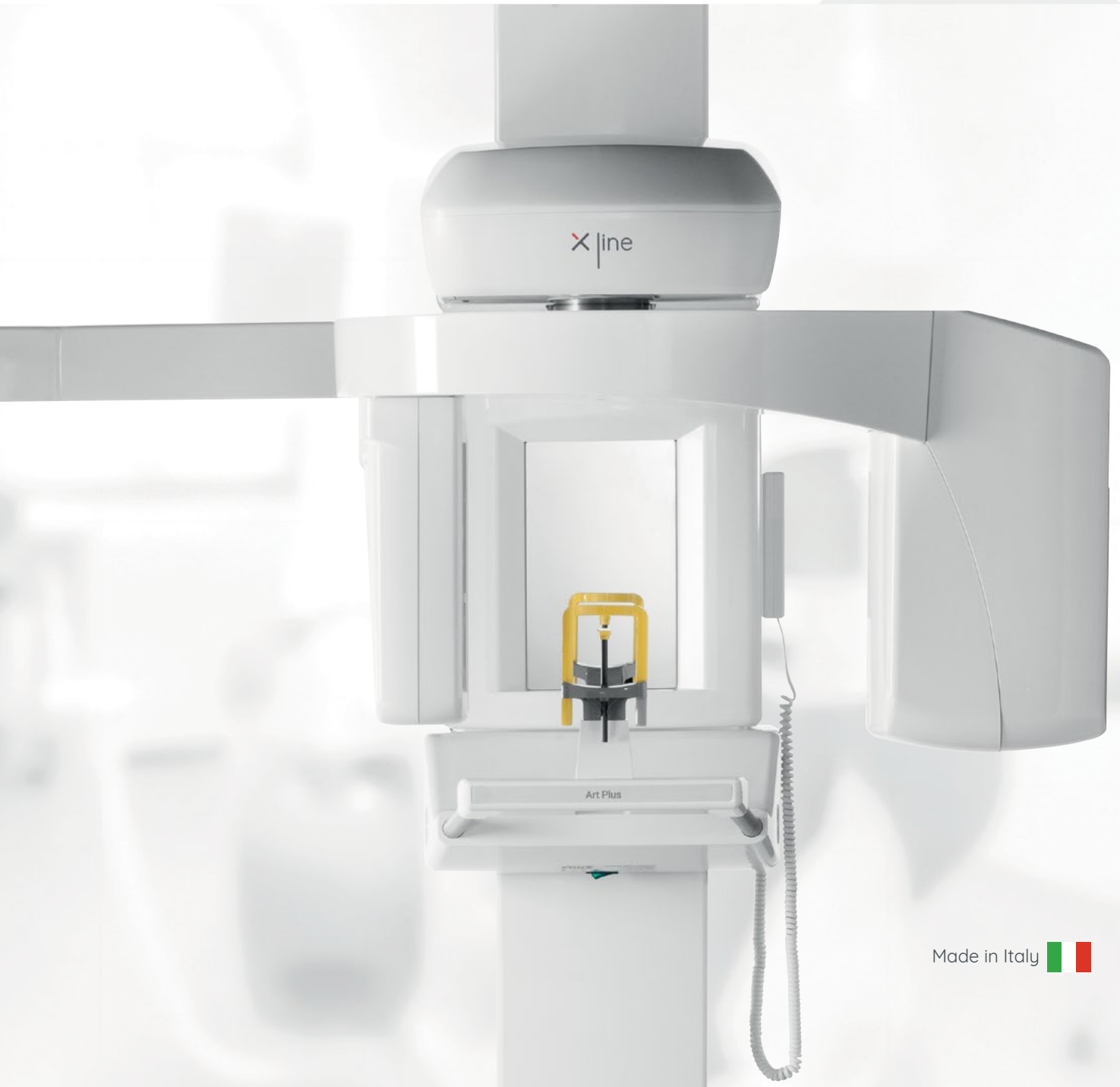




Art Plus

Premium technology
for **superb quality**

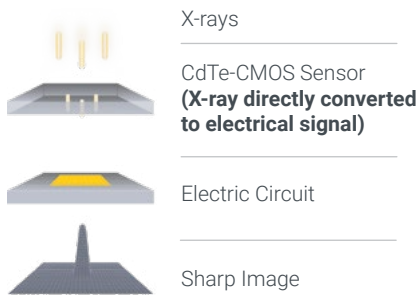


Made in Italy 

Premium technology for superb quality

Art Plus is an advanced digital panoramic system with the latest premium CdTe-CMOS sensor technology. It combines extraordinary image quality, sharpness and contrast with advanced diagnostic tools. Due to the special sensor technology and continuous autofocus function, Art Plus always delivers properly focused images, in both Pan and Pan Ceph versions.

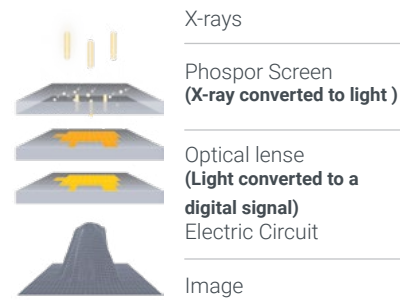
CdTe-CMOS sensor



Premium Art Plus technology

Direct conversion of X-rays to electrical signals increases the image clarity and contrast while reducing the readout time and dose.

CCD/CMOS sensor



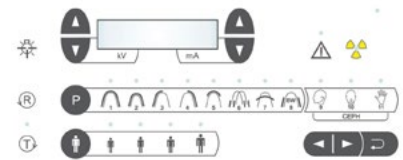
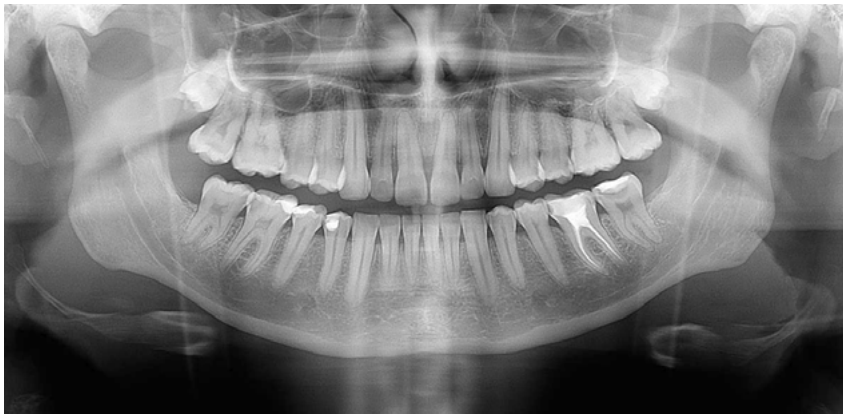
Traditional technology

Traditional acquisition uses conversion of X-rays to light before detection, causing some information loss, blurring and readout delays.

Wide focal zone up to 30 mm

Due to patented algorithms, the focal zone is up to 30 mm wide, instead of traditional 4 mm. Your region of interest will always be in focus.

Latest sensor and autofocus technology for the best image quality



Only 2 steps to go

Simply select program (8 Pan or 3 Ceph) and patient size (4 options). All exposure settings will be set automatically. Presets can also be adjusted manually.



Single sensor for both applications

Get the best quality panoramic and cephalometric images. Just click the sensor to the position where you need it.

- **Excellent image quality**

Latest direct conversion technology for high resolution, extraordinary sharpness, clarity and lower dose.

- **Easy to operate**

Intuitive and fast setting of the exposure program with just 2 clicks.



- **Continuous autofocus**

No more blurred images and additional exposures – the region of interest is always in focus.

Receptor technology	CdTe (Cadmium Telluride) CMOS sensor
Image resolution	>5 lp/mm
Dynamic range / Grayscale	16 bits / 65.536 gray shades
Exposure time Pano / Ceph	2.2 - 14.2 s / 8 - 10 s
PC connection	PCI express
Focal Spot	0.5 (IEC 60336)
Tube Voltage	61 - 85 kV
Tube Current	4 - 10 mA
Weight Pano / Ceph	98 kg / 120 kg

Panoramic programs

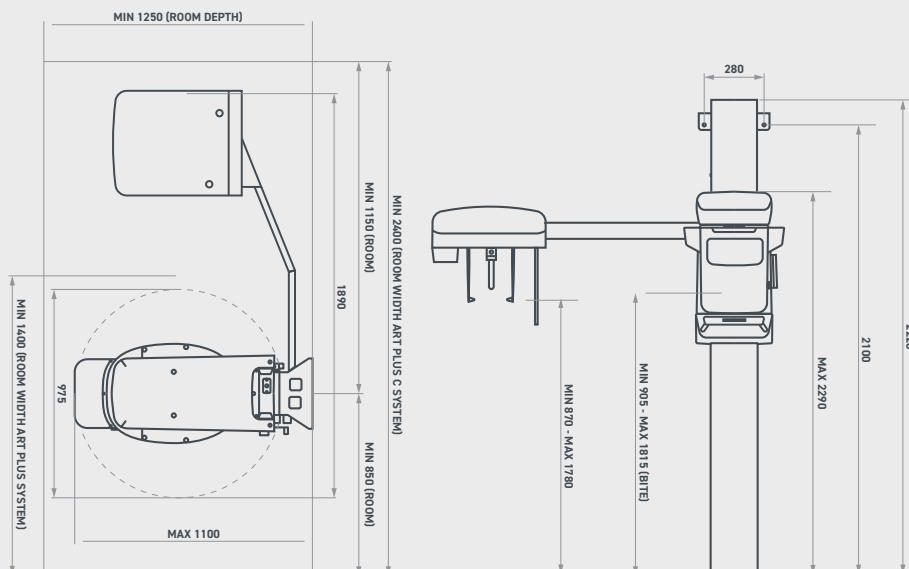
(1) Adult panoramic. (2) Child panoramic. (3) Left-Side Dentition. (4) Right-Side Dentition. (5) Anterior Dentition. (6) TMJ in normal occlusion and fully open. (7) Frontal view of Maxillary Sinus. (8) Bitewing.

Cephalometric programs

Antero-Posterior (AP). Latero-Lateral (LL). Carpus. Sub-Mento Vertex (SMV) in AP mode.

Patient size presets

(1) Large. (2) Medium. (3) Small. (4) Child.



Italian Core International Mind

BlueX -> FONA -> Xline
+ 25 years of experience

Xline is the outcome of 25 years of history in the dental sector, with two very important phases: BlueX, our origins, and Fona, our further internationalization and development. Xline is an evolution of BlueX and Fona, it's our asset to achieve new people, goals, markets and, especially, our idea of innovation. With more than 11.000 Extraoral units and 65.000 intraoral generators installed worldwide we combine Italian mastery, latest technologies and digital radiography to imagine, design and create extraoral and intraoral equipments for dental and veterinary clinics.

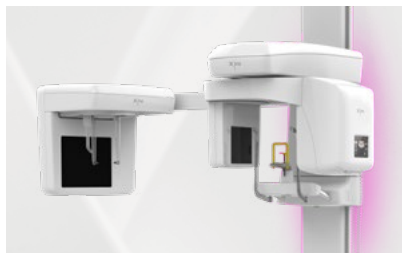
Latest technology and people caring

Digital dentistry

Intraoral **imaging**



Extraoral **imaging**



Intraoral **sensors**



Based in **Italy**, available **worldwide**



Copyright Xline s.r.l., All rights reserved, Subject to technical changes and errors in text, BRO002, v2, ENG, 202501

Count on us



Clinical
Cases



Online
Training



Remote
Support



HotLine
Support

Headquarter

Xline s.r.l.
Via G. Galilei 18
20057 Assago (MI) - Italy

Contacts

www.xlineimaging.com



DIGITAL BROCHURE

