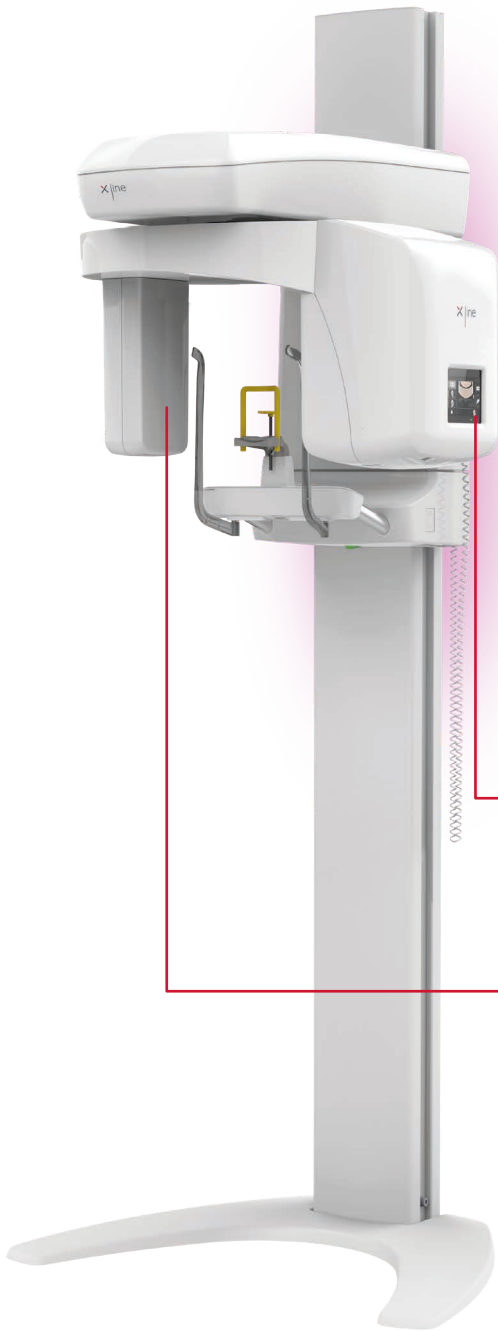


Stellaris

The **ultimate extraoral 2D/3D flexible solution**
you have always dreamed of for your clinic





Stellaris 2D

Stellaris 2D is the most recent panoramic of the Xline gamma, offering 9 panoramic programs and ready for the future, thanks to the integrated touchscreen.

In an era when the remote upgrades are becoming more and more important, Stellaris platform is designed to be easily accessible and upgradeable from remote.

Based on Stellaris 3D platform which is already a well established unit in the market, Stellaris 2D brings innovation to the panoramics scenario.

- **Smart Backlight**
Stellaris communicates with you through the colors.
- **Integrated touchscreen**
For a smooth and easy to use acquisition.
- **CMOS Linear Sensor**
High image quality at a very low dose.

Panoramic Bitewing

Time efficient preventive scan or perfect alternative for patients that do not tolerate intraoral bitewings.

High definition and eco programs

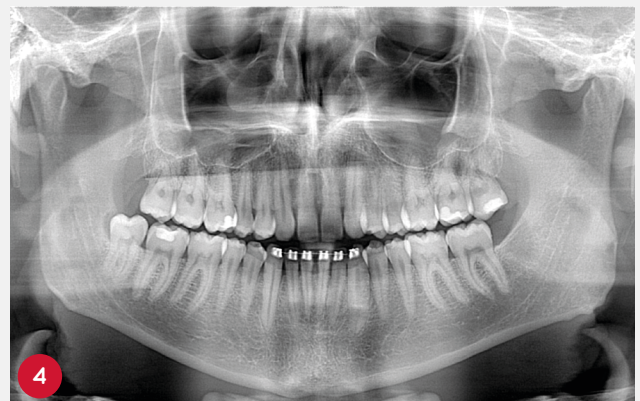
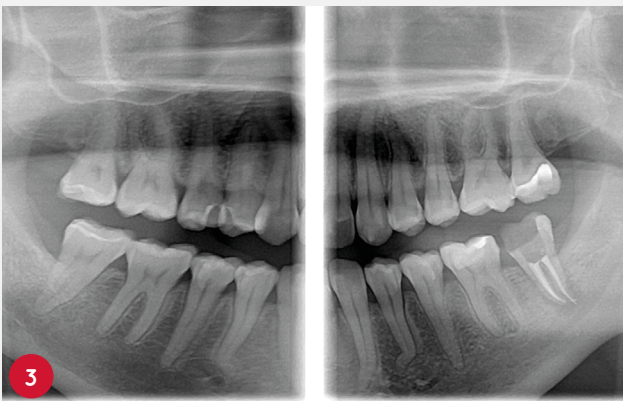
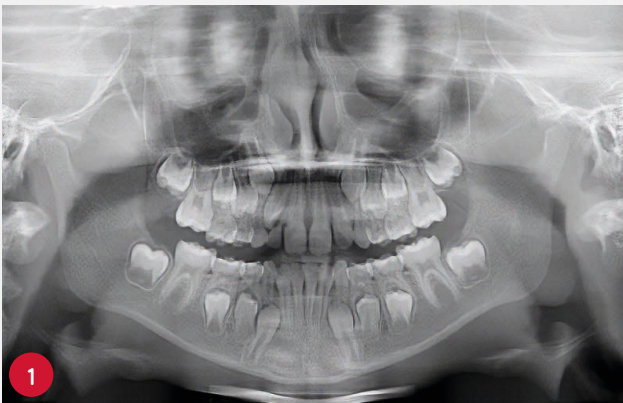


Adult and, more importantly, child programs are crucial for ECO low dose examinations allowing high diagnostic image quality for both overview and demanding diagnostic tasks.

New dynamic and automatic Image Focusing

Thanks to the innovative and smart sensor-software interface technology, the panoramic images are automatically focused at every exposure, adjusting eventual patients' mispositioning or movements artifacts.

- 1 Child Panoramic
- 2 Adult Panoramic
- 3 Bitewing
- 4 Adult Panoramic
- 5 Adult half dentition left



Stellaris 2D Ceph

The most flexible 2D platform of our Extraoral gamma is here. Stellaris 2D Ceph, with its brilliant panoramics and one-shot cephalometric images can be upgraded to 3D anytime.

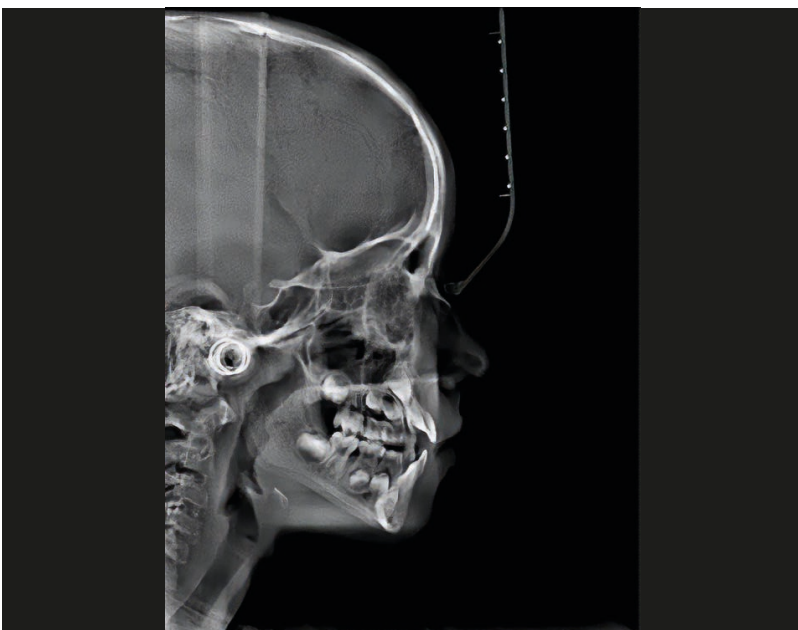
Boost your clinic to another level whenever you want and get a complete 3 in 1 solution by adding later the 3D module in a very short time.

Choose among the ceph size 18x24cm or 30x24cm and obtain brilliant images thanks to the new CSI-CMOS flat panel sensor.

Beautiful and compact design, smart backlight and touchscreen, automatic sensor movement and comfortable patient positioning are the right solutions for modern clinics.



— ● 0,5s!



— ● 0,2s!

● One shot ceph

High performances and instant images with the CSI-CMOS One-shot flat panel.



● Dedicated linear sensor

Dedicated linear sensor for the best image quality.

Smart Backlight

The lights on the back always indicates to the operator the status of the unit and they have a calming effect on the patient.



Stellaris 3D & 3D Ceph

Stellaris 3D is a complete and compact fully upgradeable 3D CBCT, Panoramic and Cephalometric system, which covers an entire range of applications – from endodontics, periodontology, surgery, implantology to orthodontics – everything you need in your daily practice.

It's a flexible solution that can be upgraded to one-shot cephalometry any time.

Diagnostic applications

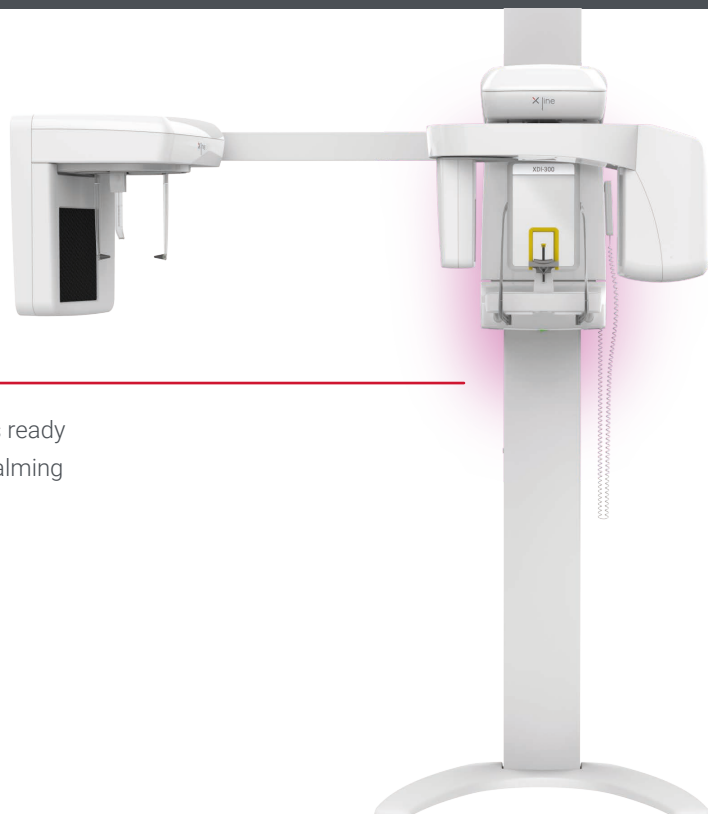
Volume [cm]	Children	Endo	Surgery	Perio	Implant	Ortho	TMJ	Sinuses
5 x 6.5		✓		✓	✓			
6 x 10		✓	✓	✓	✓			
7 x 6.5		✓		✓	✓			
8 x 6.5	✓		✓	✓	✓	✓		
7 x 10		✓	✓	✓	✓			
8 x 10	✓	✓	✓		✓	✓		✓
11 x 6.5			✓	✓	✓	✓	✓	
11 x 10			✓		✓	✓		✓



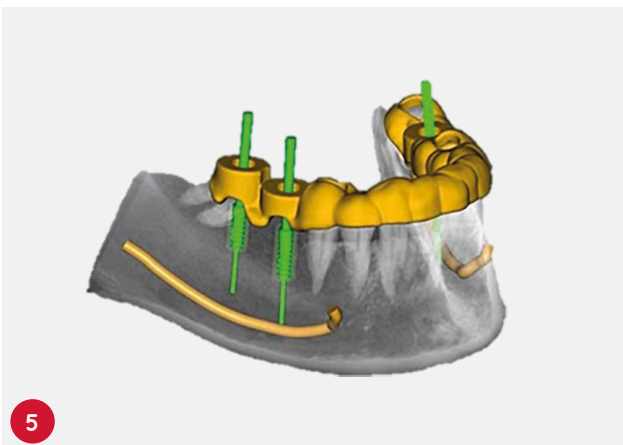
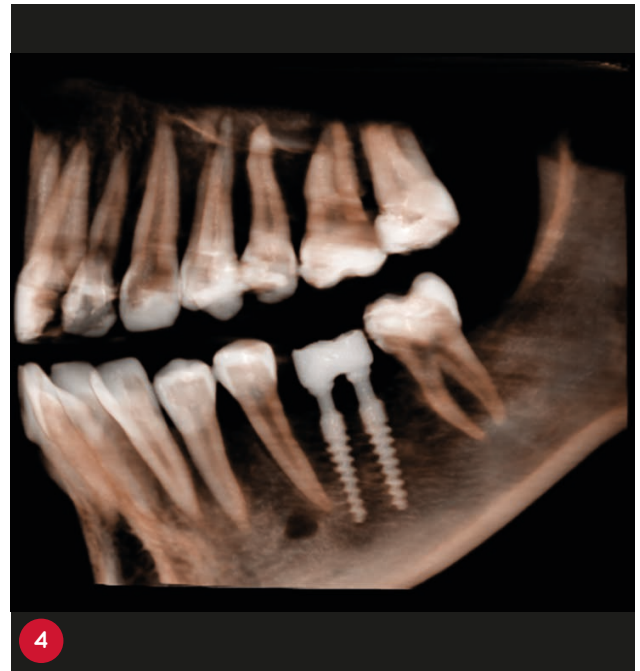
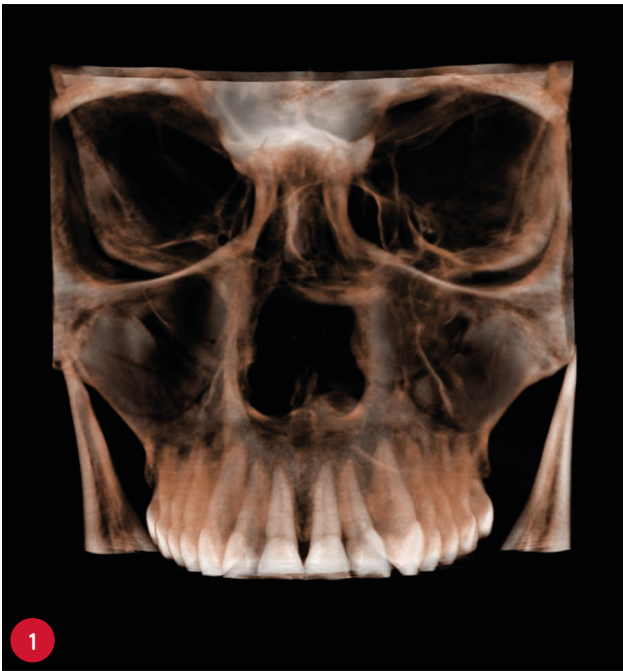
Ergonomic handlers, headrest and chinrest for a comfortable positioning and perfect stability during the exam.

It comes with an intuitive touchscreen, allowing to choose the desired program - Panoramic, Ceph or 3D.

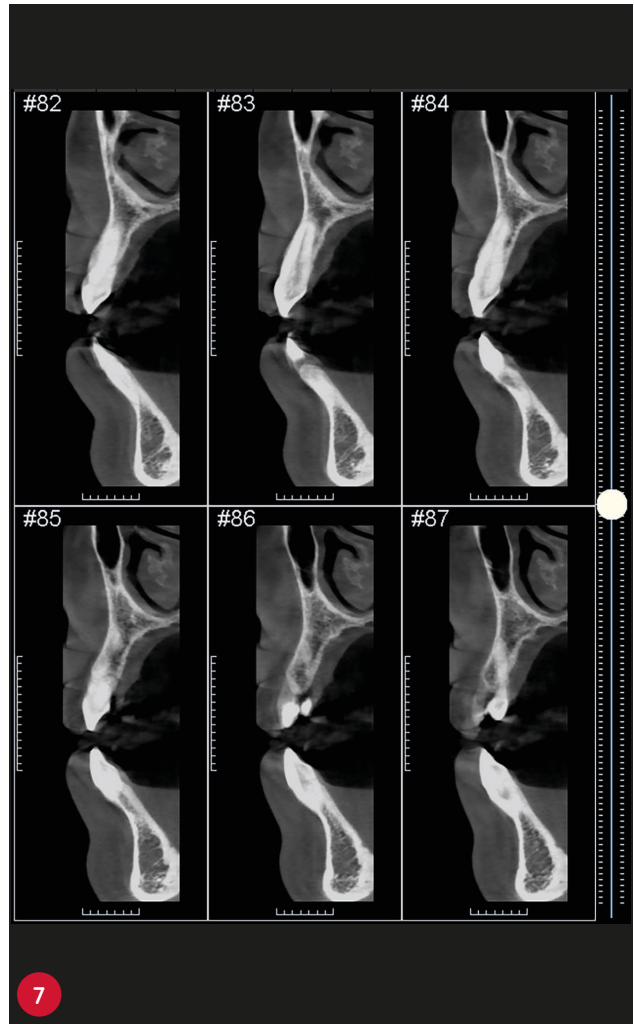
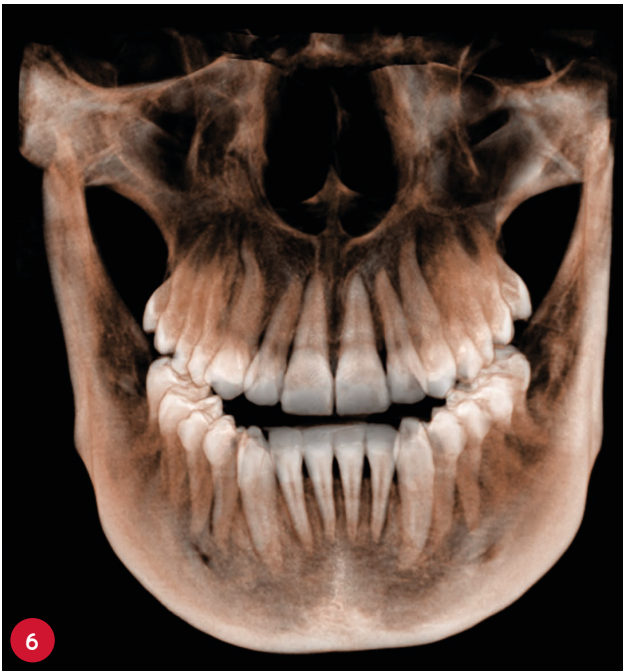
It offers 8 different fields of view, ranging from 5x6.5cm to the largest at 11x10cm.



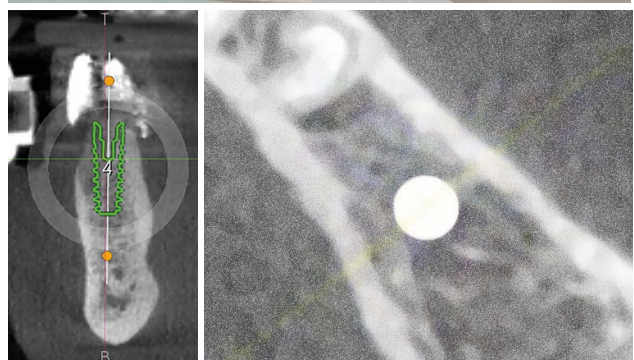
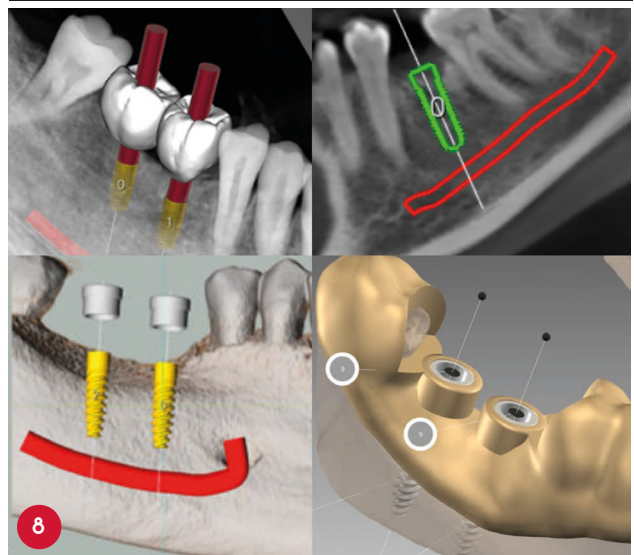
The smart backlight will indicate when the unit is ready to take the X-ray and simultaneously provide a calming atmosphere for your patient.



Stellaris 3D is perfectly connected with the Implant 3D software which allows the Implant planning simulation.



- 1 11x10 HD volume for Sinuses Evaluation.
- 2 5x6,5 HD small volume for endodontic and periodontic evaluations.
- 3 7x6,5 volumes for local evaluations of periodontal diseases or implants osteointegration checks.
- 4
- 5 Example of multiple Implant Planning.
- 6 11x10 HD for a full mouth evaluation.
- 7 Cross sections – evaluation of the cortical bone.
- 8 Examples of Single and Multiple Implant Planning.

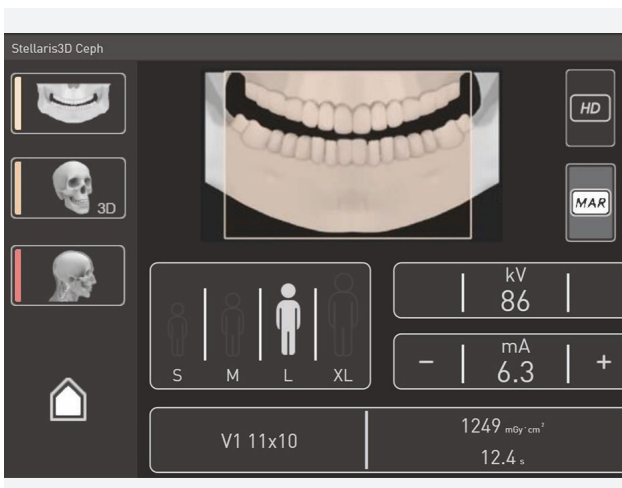


Highlights and benefits



Touchscreen next to patient

Possibility to set all parameters while positioning the patient is a benefit for smooth workflow – resulting in ergonomics and speed to acquire the image and make it ready for diagnosis.



Mirroring

Remote control of the unit from the PC screen allows the adjustment of settings without the need to run back and forth to the patient.



Quick positioning

Frontal mirror, laser beams and easy positioning picture guide on the touchscreen are available to ensure the patient's head is in optimal position to capture the desired region.



Quick cephalometrics

When you need to take a Cephalometric image, patient positioning is even faster. A one-shot CEPH image is acquired in less than 1 second, preventing patient movement and ensuring the best image quality.



Smart backlight

The light glow not only has the aesthetics effects and calms down the patient, but also signals the unit status and informs the operator from a distance.



Safe & easy

Due to the automatic sensor rotation, it is not necessary to move or detach the sensor between Panoramic, 3D and Cephalometric modes. It requires zero effort, without the risk of manually handling an expensive sensor.

Highlights and benefits



Comfortable operation

Once the patient is positioned, simply hold the exposure button.

The smart backlight guides you through the progress of image acquisition and automatically communicates it to the software.



Instantly upgradeable

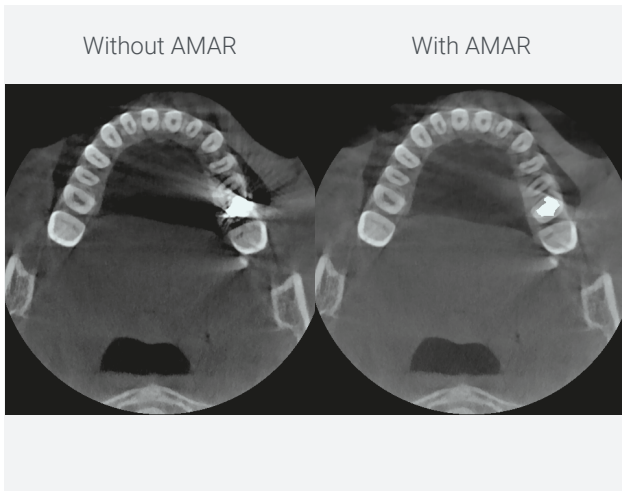
The unit can be installed with or without OneShot ceph arm.

It is ready for field upgrade for Cephalometric arm later.



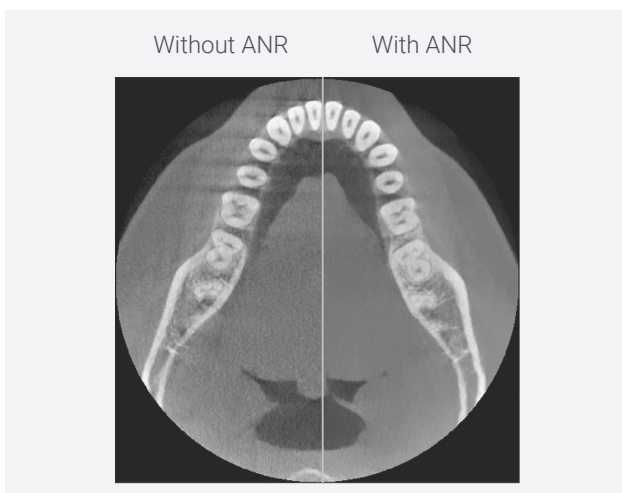
Plug & Play concept

Stellaris Family is ready to use immediately, as it comes with a pre-installed tower computer or with an optional laptop in the case of Stellaris 2D/2D Ceph, and with the latest imaging software OrisWin DG Suite by Xline.



Automatic metal artifact reduction amar

Metal artifacts distort in CBCT imaging. Stellaris 3D automatic metal detection reduces those effects to minimum.



Automatic noise reduction anr

The presence of noise in 3D images can disturb the visibility especially in ENDO applications. Xline ANR technology performs automatic reduction of noise.



Advanced technology for best results

The latest technology on board has been used to achieve a high level of image details, the advanced kinematic motions allow smooth and quiet unit operation.

Stellaris

Comments 3 in 1 solution: Panoramic 2D and 3D CBCT, Panoramic 2D and 3D CBCT with Ceph One shot, Panoramic 2D, Panoramic 2D Cephalometric One Shot (upgradable to 3D).

3D	3D Programs	23 programs: adult full, child full, adult and child upper and lower jaw, adult and child sinuses, surgical and implant volume front, left and right, hemi-arc left and right, upper and lower, ENDO volume in 6 different positions, TMJ right and left.
	Volume size 3D	8 volumes: 5x6.5, 7x6.5, 6x10, 7x10, 8x6.5, 8x10, 11x6.5, 11x10 (in cm)
	Voxel size	80 µm, 190 µm
	Exposure time 3D	12.4 s (STD mode) 16.1 s (HD mode)

Panoramic	Panoramic Programs	9 programs: adult pano, child pano, dentition, Panoramic bitewing, TMJ, sinuses, half dentition left, half dentition right, anterior teeth.
	Pixel Size	99 µm
	Exposure time 2D	4.6 – 14.2 s (STD mode) 3.2 - 9.9 s (ECO mode)

Cephalometric	Ceph Programs	LL 30x24, LL 18x24, AP, PA, Carpus
	Ceph Image Size	240x300 mm, 240x180 mm
	Exposure time Ceph	0,5 for adults and 0,2 for children

Patient Sizes	4 sizes	small, medium, large and extra-large
----------------------	---------	--------------------------------------

Software - OrisWin DG Suite

Additional viewers	Included 10 workstation licenses with optional extension
---------------------------	----------------------------------------------------------

DICOM Store for PACS

DICOM Worklist	Optional DICOM upgrade of Software license
-----------------------	--------------------------------------------

DICOM Print

DICOM image import / export	Included
------------------------------------	----------

Print for 2D images	Included
----------------------------	----------

TWAIN	Included
--------------	----------

3rd party Patient management software links	Included
----------------------------------------------------	----------

Import/Export of 2D Images	Included
-----------------------------------	----------

Import/Export of 3D Images	Included, DICOM standard
-----------------------------------	--------------------------

Export with viewer on USB/CD/DVD	Included
-----------------------------------------	----------

Supported image formats	DICOM, DICOM raw image, JPG, BMP
--------------------------------	----------------------------------

Implant planning softwares	Available
-----------------------------------	-----------

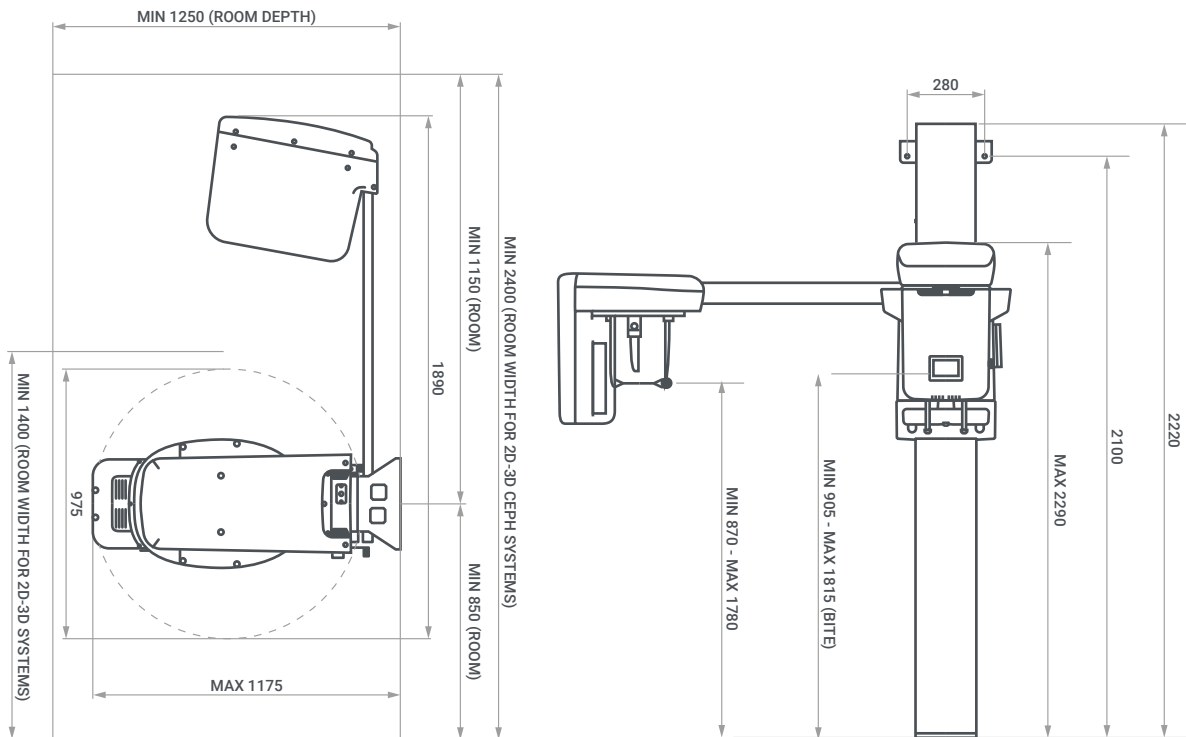
Other supported products	Compatible with all the Xline Imaging platforms such as: StarX PRO and Art Plus Family
---------------------------------	----------------------------------------------------------------------------------------

Ergonomics

Patient position	Standing or sitting
Wheelchair accessible	Yes
Positioning	against mirror, 3 aiming light beams, temporal support

Dimensions & installation

Weight	109 kg without ceph, 137 kg with ceph
Footprint	Unit without cephalometric arm 97.5 cm x 117.5 cm x 222 cm Unit with cephalometric modality 189 cm x 117.5 cm x 222 cm
Fixation	wall fixation and floor fixation with baseplate
Power supply	230 V \pm 10%, 115 V \pm 10%, 50/60 Hz
Computing system	Included, with preinstalled reconstruction and viewing software and patient database. Monitor not included
Connectivity	Stellaris 3D/3D Ceph: 2 ethernet cables Stellaris 2D/2D Ceph: 2 ethernet cables + USB 3.0 adapter



Italian Core International Mind

BlueX -> FONA -> Xline
+ 20 years of experience

Xline is the outcome of over 20 years of history in the dental sector, with two very important phases: BlueX, our origins, and Fona, our further internationalization and development. Xline is an evolution of BlueX and Fona, it's our asset to achieve new people, goals, markets and, especially, our idea of innovation. With more than 11.000 Extraoral units and 65.000 intraoral generators installed worldwide we combine Italian mastery, latest technologies and digital radiography to imagine, design and create extraoral and intraoral equipments for dental and veterinary clinics.

Latest technology and people caring

Digital dentistry

Intraoral **imaging**



Extraoral **imaging**



Intraoral **sensors**



Based in **Italy**, available **worldwide**



Copyright Xline s.r.l., All rights reserved, Subject to technical changes and errors in text, BRO003, v1, ENG, 202401

Count on us



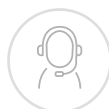
Clinical
Cases



Online
Training



Remote
Support



HotLine
Support

Headquarter

Xline s.r.l.
Via G. Galilei 18
20057 Assago (MI) - Italy

Contacts

www.xlineimaging.com



DIGITAL BROCHURE

CE
0051

