

XDI-150

The ultimate DC
intraoral generator



The modern and flexible solution you've always dreamed of for your clinic.

Thanks to the innovative layout concept, XDI-150 perfectly fits into your clinic: wall mounted, mobile or mobile with laptop tray are only three of the multiple possible solutions.



The removable touchscreen can be used as a remote button itself and can be optionally placed outside the x-rays room without the need of the x-rays remote.



Take the advantage of the wireless remote on board: no more cables between the unit and the patient, for a seamless workflow. Easily rechargeable and with its dedicated basket. It comes also with cable to meet every request.

Wireless remote and removable touchscreen for an easy to use, modern and smart solution

- The intuitive graphic interface allows a smooth and pleasant workflow.
- Select among 10 dedicated programs for every clinical application for the best diagnostic outcome, or customize the exposure parameters for a tailored daily experience.



Mobile version available in the standard configuration or with a practical laptop support tray. The touchscreen can be mounted on the left or on the right of the tray according to your needs.

Flexible, it fits in every clinic: choose XDI-150 and decide how to configure your units on site, no need to decide the configuration in advance.

latest technology and new electro-mechanic concepts for a fast and customizable installation

Universal voltage and always stable power output



Any input voltage -> XDI-150 -> stable radiation output

- Ready for the future: the integrated touchscreen easily accessible by USB keys can be upgraded even after years with new programs and features. Your unit will be always up to date!
- Smooth surfaces for a fast and efficient cleaning.
- Compact and light, easy to move and with a robust and reliable folding arm.
- Collimators 3x4cm and 2x3cm and 10cm extension available.

TECHNICAL SPECIFICATION

XDI-150

Generator	High Frequency (DC)
Focal Spot	0,4 (IEC 336/1997)
Tube voltage, current	60/65/70 kV (selectable), 7 mA
Line voltage	90-264V, 50/60 Hz
Focus-skin distance	Standard 20cm (collimator 30cm)
Patient sizes	Adult, Child
Preset programs	10
Exposure time	0,01 - 3.2 s
Wall Mount Extensions	30, 60, 80 and 100cm



Italian Core International Mind

BlueX -> FONA -> Xline
+ 25 years of experience

Xline is the outcome of 25 years of history in the dental sector, with two very important phases: BlueX, our origins, and Fona, our further internationalization and development. Xline is an evolution of BlueX and Fona, it's our asset to achieve new people, goals, markets and, especially, our idea of innovation. With more than 11.000 Extraoral units and 65.000 intraoral generators installed worldwide we combine Italian mastery, latest technologies and digital radiography to imagine, design and create extraoral and intraoral equipments for dental and veterinary clinics.

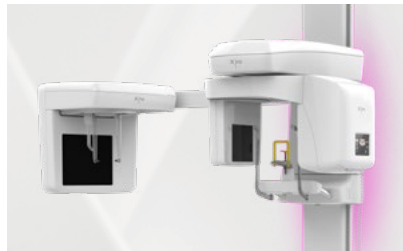
Latest technology and people caring

Digital dentistry

Intraoral **imaging**



Extraoral **imaging**



Intraoral **sensors**



Based in **Italy**, available **worldwide**



Copyright Xline s.r.l., All rights reserved, Subject to technical changes and errors in text, BRO001, v2, ENG, 202501

Count on us



Clinical
Cases



Online
Training



Remote
Support



HotLine
Support

Headquarter

Xline s.r.l.
Via G. Galilei 18
20057 Assago (MI) - Italy

Contacts

www.xlineimaging.com



CE
0051

EU-MDR ✓